



SMART IRRIGATION SYSTEM

¹Gauri tope, ²A.S. Patel

^{1,2}Department of E&TC M.S.S college of Engineering (Jalna)

Email: ¹gauritope0@gmail.com, ²atmeshpatel@gmail.com

Abstract

The smart irrigation system was developed to optimize water use for agricultural crops. The system has a distributed wireless network of soil-moisture and temperature sensors placed in the root zone of the plants. In addition, a gateway unit handles sensor information, triggers actuators, and transmits data to a web application. An algorithm was developed with threshold values of temperature and soil moisture that was programmed into a microcontroller-based gateway to control water quantity. The system was powered by solar panels and had a duplex communication link based on a cellular-Internet interface that allowed for data inspection and irrigation scheduling to be programmed through a web page.

Index Terms: Automation, cellular networks, Internet, irrigation, measurement, water resources, wireless sensor networks (WSNs).

I. INTRODUCTION

Indian agriculture is dependent on the monsoons which is not sufficient sources of water. The automatic irrigation system can provide water to farms according to their moisture and soil types. Suitable water supply is required because of most of the farms are depends upon the monsoon.

In conventional system, the farmer has follow a schedule for watering, which is different for different crops. Too much watering causes diseases to plants and even they die out. To provides uniform and required level of water for both plain and sloppy areas and avoids the water overflow at the sloppy areas and considering the current labor shortage situation, the automated sensing system will be most appropriate. The primary source of water in agricultural

production in most parts of the world is rainfall. The three main factor that characterize rainfall are amount, frequency and intensity, the values of which vary spatially and temporally. When the weather does not provide enough rainfall to feed agricultural needs, farmers should supplement water available through rainfall by some type of irrigation to manage the soil moisture and nutrient concentration to create the optimum-growing environment. With limited availability of freshwater and increasing costs of energy and manpower, irrigation, which can contribute substantially to crop production should be planned and managed in such a way that no drop will be wasted.

Due to complexities in the precise knowledge of the rainfall's main characteristics, the irrigation scheduling cannot be planned neither on the minimum values of the average precipitation during the growing season nor on the maximum. The former may lead to an over-irrigation causing crop diseases and waste of water, fertilizer, and energy. Also, and besides running off and evaporating, the excess water will percolate deep to soil layers below the root zone with all nitrates and other pesticides it contains polluting the ground water. The latter on the other hand, leads to an under-irrigation causing a highly reduction in both crops quantity and quality. Therefore, deciding when to turn on the irrigation system and how much water to apply is a complex decision-making process. With increasing population pressure throughout the nation and need for increased agricultural production there is need for management of nation agricultural resources. The real time values of soil moisture, air humidity, temperature and water level in the soil are wirelessly transmitted using wireless technology and

protection from insect attack to the crop for better production.

The objective of this project is to save water and reduce human intervention in the agriculture field. Continuously Monitoring the status of sensors and provide signal for taking necessary action. To get the output of soil water sensor & provide water to crop accordingly. To observe other parameters for better yield.

II. RELATED WORK

There are many works on the application of WSN for monitoring system such as in [2], where Zigbee is used to monitor the condition of long span bridge after considering disadvantages of the currently used wire and cable for data communications such as high installation cost of communication and power supply for the sensors, difficulty in the installation of steel pipeline for protecting the cables, sensor data distortions due to temperature changes on cables, noise affecting cables and sensors etc. The Zigbee is used for the short distance communication whereas CDMA (Code Division Multiple Access) infrastructure was used for long distance communication between sensors and the server

system. Recent advances in microelectronics and wireless technologies created low-cost and low-power components, which are important issues especially for such systems such as WSN [4]. Power management has been addressed in both hardware and software with new electronic designs and operation techniques. The selection of a microprocessor becomes important in power aware design.

III. SYSTEM HARDWARE DESIGN

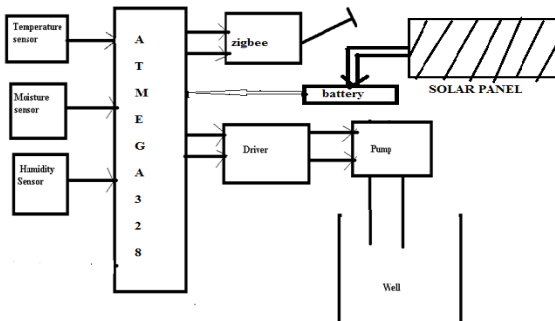


Fig.1. Transmitter

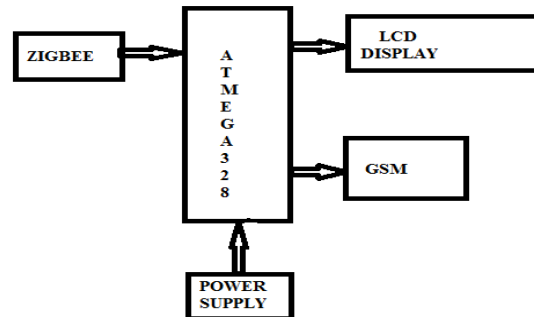
The block diagram of the system consists of two sections: transmitter and receiver section which effectively measures parameters by using different sensors like temperature sensor,

humidity sensor, soil moisture sensor and the system also consist of microcontroller 328P, GSM module, LCD, and zigbee module.

Fig.2. Receiver

2.1 Sensors

As shown in the transmitter block there are



three sensors used in the system, which are mainly as follows:

- a. Temperature
- b. Soil moisture
- c. Humidity

The LM35 precision integrated-circuit temperature sensors, whose output voltage is linearly proportional to the Celsius (Centigrade) temperature. The LM35 thus has an advantage over linear temperature sensors calibrated in° Kelvin, as the user is not required to subtract a large constant voltage from its output to obtain convenient Centigrade scaling. LM35 is temperature sensor is used to sensing the temperature. It is integrated circuit that can be used to measure temperature with electrical output. It is more accurate and its operating temperature range is from -55 to 150 degree C. A humidity sensor senses relative humidity. This means that it measures both air temperature and moisture. Relative humidity, expressed as a percent, is the ratio of actual moisture in the air to the highest amount of moisture air at that temperature can hold. The warmer the air is, the more moisture it can hold, so relative humidity changes with fluctuations in temperature. HS1100 is used for sensing humidity. Humidity is measured in percentage of vapour in the air. HS1100 gives the output in terms of frequency range 5kHz to 10kHz.

Soil moisture sensors measure the water content in soil. A soil moisture probe is made up of multiple soil moisture sensors. One common type of soil moisture sensors in commercial use is a Frequency domain sensor such as a capacitance sensor. Another sensor, the neutron

moisture gauge, utilize the moderator properties of water for neutrons. In This sensor We are using 2 Probes to be dipped into the Soil As per Moisture We will get Analog Output variations from 0.60volts - 12volts. Input Voltage 12 VDC.

2.2 Microcontroller used

The ATmega328P is a low-power CMOS circuit with 8-bit microcontroller, and is depended on the AVR with enhanced RISC architecture. By executing high power instructions in a single clock frequency, the ATmega328P gets a result of throughputs approaching 1 MIPS per MHz which allows the system designer to find optimize power consumption versus processing speed.

2.3 Data Transmission

GSM Module

The SIM900 can be used embedded in many of the applications as it is complete Quad-band GSM/GPRS solution in a SMT module. Feature for an industry-standard interface, the SIM900has the capability of delivering GSM/GPRS 850/900/1800/1900MHz performance for voice, Data, SMS, and small form factor Fax and requires low power consumption. GSM900 has an small configuration of 24mm x 24mm x 3 mm, and can be fit in nearly all the space requirement in M2M application, as there is slim and compact demand of design.

SIM900 is designed with a highly powerful with single-chip processor and integrated AMR926EJ-S core, Quad - band GSM/GPRS module having a size of 24mmx24mmx3mm, SMT type suit for many application, An embedded of highly Powerful TCP/IP protocol stack, depends on mature and field-proven platform, and is backed up by a support service provided, from definition to production and design.



Fig.3. GSM 900

Zigbee module.

Zigbee 802.15.4 RF modules are of XBee family, looking for excellent wireless performance, it is the premiere choice for OEMs and a small form factor solution and also cost-effective. Every XBee module comes in a two range that can be regular or long-range. Pin-for-pin compatibility is found in all XBee modules with the exception of a few varying I/O features, a standard footprint for OEMs is provided to different applications.

XBee Series 1 is depended on Zigbee 802.15.4 silicon from free scale. It is ideal for the topologies such as point-to-multipoint, point-to-point and peer-to-peer because of 802.15.4 firmware feature. The XBee Series 1 gives the user maximum control over minimum latency and network nodes. XBee Series 2 is referred from Zigbee/802.15.4 silicon which is from Ember. For creating ad-hoc mesh networks is based from features of Zigbee firmware. Automatic route discoveries are performed by the XBee Series 2 which can create a self-healing network for the routers which are fully function and also for low-power end devices. Whereas XBee Series 1 and Series 2 modules do not communicate with each other. It is basically known for ease of use, the XBee modules are ready in form and can be operated out of the box and an API for advanced, user-settable configurations, it also offer simple AT commands.

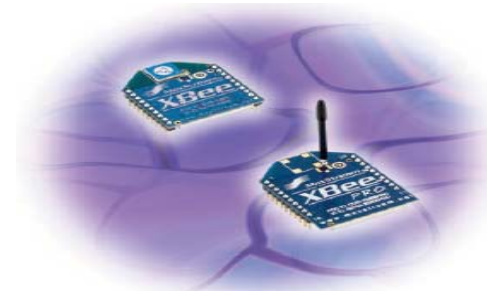
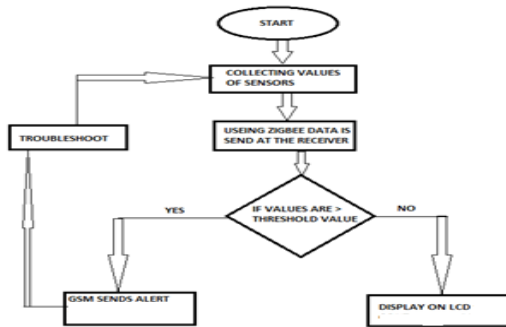


Fig.4. Zigbee module

For effective wireless data communication without a license, 2.4 GHz ISM band, XBee modules are known worldwide. XBee modules are basically a part of Dig's full line of Drop-in Networking products. With the connection of Port X gateways and XBee device adapters, extenders and modules, this provides end-to-end wireless connection to commercial-grade electronic devices which is in locations where proper infrastructure exists or where customer needs are satisfied.

IV. PROGRAMMABLE LOGIC



The smart irrigation system uses temperature, soil moisture and humidity Sensor to measure the relative parameter in order to give the water to crops. Since the outputs of the sensors measured are analog in nature and microcontroller will handle solely digital signals, the system makes use of ADC which is inbuilt in microcontroller. The outputs of sensors are directly given to ADC, which converts the analog signals into the corresponding digital signals. These digital signals at microcontroller 328P then uses Zigbee module for communication that is to send data at the receiver and GSM module at the receiver side interfaced with microcontroller 328P for communication at a particular level. Microcontroller sends the measured values to wireless communication zigbee module and further uses GSM module to send message to the farmer. Since it's a real time system thus microcontroller sends the measured values of different parameter and according that water is given to the crops. Microcontroller also displays the values of the parameter on the LCD. The power supply is given by the charging the battery by the solar panels and the appropriate voltage is given to all the components.

V. ADVANTAGES

1. This makes increase in productivity and reduces water consumption.
2. This is safest and no manpower is required.
3. Reduce soil erosion and nutrient leaching.
4. Require smaller water sources.

Conclusion

The smart irrigation system implemented is feasible and cost effective for optimizing water resources for agricultural production. This irrigation system allows cultivation in places with water scarcity thereby improving sustainability. The smart irrigation system developed proves that the use of water can be diminished for a given amount of fresh biomass production. The use of solar power in this irrigation system is pertinent and significantly important for organic crops and other agricultural products that are geographically isolated, where the investment in electric power supply would be expensive. Real time system for irrigation is based on GSM and zigbee module. The system is incredibly versatile and economical. It doesn't need individuals on duty it is so easy and reliable.

REFERENCES

- [1] (2009) The Zigbee Alliance website. [Online]. Available: [http:// www.zigbee.org/](http://www.zigbee.org/)
- [2] Chae, M.J., Yoo, H.S., Kim, J.R., and Cho, M.Y., "Bridge Condit ion Monitoring System Using Wireless Network (CDMA and Zigbee)," *23rd International Symposium on Automation and Robotics in Construction ISARC 2006*, Tokyo, Japan, 3 – 5 Oct 2006.
- [3] Sangmi Shim, Seungwoo Park and Seunghong Hong, "Parking Management System Using Zigbee," *IJCSNS International Journal of Computer Science and Network Security*, Vol. 6 No. 9B, September 2006.
- [4] F. Vergari, V. Auteri, C. Corsi and C. Lambert i, (2009, October 31), "A Zigbee-based ECG Transmission For Low Cost Solut ion In Home Care Services Delivery," *Mediterranean Journal of Pacing and Electrophysiology – Special Issue Article Preview*, [Online], Available : ht tp:// www.mespe.net/en/news/lem/
- [5] Y. Erdem, L. Arin, T. Erdem, S. Polat, M. Deveci, H. Okursoy, and H. T. Gültas, "Crop water stress index for assessing irrigation scheduling of drip irrigated broccoli (*Brassica oleracea L. var. italica*)," *Agricult. Water Manag.*, vol. 98, no. 1, pp. 148–156, Dec. 2010.